

# Fireboat Fly—Oyster Creek Canvas

Main Fabric: Top Gun, Marlen Textiles

Tops & Sunflys



## WHAT ARE THE PROJECT SPECIFICATIONS?

This is a top for sun protection for a fireboat that operates out of Lake Havasu and was built here in Washington State. They needed the top to be strong as this forward facing bimini has to withstand high speeds over 60 MPH and not blow to pieces! Also the framework couldn't interfere with the main firehose.

## WHAT IS UNIQUE OR COMPLEX ABOUT THE PROJECT?

I entered this project as I think the frame design is unique and does hold up to high speeds and doesn't move when that boat is ripping across the water. I think it looks really cool and works really well, basically what you want to achieve on all projects!



Disclaimer: Content is submitted by the participant. ATA is not responsible for the content descriptions of the Marine Fabrication Excellence entries.

# “Shade the Bow”—42' Prestige—Lake Shore Boat Top Company

Main Fabric: Stamoid Light Fabric, Keyston Bros.

Hardware/Findings: Carbie Shade Poles, Keyston Bros.

Hardware/Findings: Stainless Mounts - Aquarius Marine Metal Fabrication

Webbing/Narrow Fabric: Solar Fix Thread, The Miami Corp

Tops & Sunflys



## WHAT ARE THE PROJECT SPECIFICATIONS?

This forward bow shade was constructed with Stamoid White Light Fabric and a newly designed Carbie Shade Poles and Mounts. The customer wanted a Carbon Fiber application with his shade poles and was very particular on how he wanted it to attach from the hard top of the bow of his boat. We created a custom stainless mounting bracket and welded D-Rings to a base plate. When the shade was attached, the attachment clips will not rub on the paint of the boat.

## WHAT IS UNIQUE OR COMPLEX ABOUT THE PROJECT?

Our team felt that this unique design of this Forward Bow Shade was a creative way to still enjoy a shaded place on the bow of the boat. This bow sun-shade provides an option for shade and for entertaining. What is also nice about this design is that the shade poles are adjustable in height, so depending on how much shade you want, you have an option for moving it up or down to control the coverage. A great way to relax or party on the bow all day!



Disclaimer: Content is submitted by the participant. ATA is not responsible for the content descriptions of the Marine Fabrication Excellence entries.

# Offshore 80 Twice As Nice—Signature CanvasMakers LLC

Main Fabric: Commercial 95, Trivantage LLC

Tops & Sunflys



## WHAT ARE THE PROJECT SPECIFICATIONS?

We received a request from the Owner an Offshore 80' to update their current shade solution on the upper and aft decks to simplify and prevent sagging. We upgraded to a commercial shade fabric and increased the purchase to 2:1. Our designer Introduced setbacks and setbacks and scalloping, to compensate for the specific fabric to provide maximum coverage when fully tensioned.

## WHAT IS UNIQUE OR COMPLEX ABOUT THE PROJECT?

We needed to incorporate a commercial design for recreational use. Both shade solutions were larger than (our) normal. We designed a new tensioning system with 2:1 purchase and incorporated it into the existing pole system.



Disclaimer: Content is submitted by the participant. ATA is not responsible for the content descriptions of the Marine Fabrication Excellence entries.

# Hinkley Fly Awning—Yacht Canvas, Inc.

Main Fabric: WeatherMax 3D by WeatherMax

Tops & Sunflys



## WHAT ARE THE PROJECT SPECIFICATIONS?

This project originated from the need to introduce shade to the cockpit of a Hinkley 36 EP without resorting to drilling into the boat. We found an ideal solution through a local supplier, Performance Textiles. David Kuhl crafted a set of rod holder-mounted carbon fiber poles, perfectly addressing the unique constraints we faced.

While exploring various shade materials for fly awnings, such as Textaline, Soltis, and Awntex, we hadn't been entirely satisfied with conventional fabrics. However, Weathermax 3D proved to be the perfect choice, offering excellent stretch and packability. This material's ability to meet both aesthetic and functional requirements shines, especially when customers seek versatility beyond the original purpose of the product. The forward end of the awning attached via track to the hardtop and the aft ends to the pulley system in the carbon fiber poles.

In the end, we delivered a sleek fly awning that not only met the aesthetic preferences but also accommodated the specific constraints of a customer deeply connected to his cherished vessel.

## WHAT IS UNIQUE OR COMPLEX ABOUT THE PROJECT?

This was our first go using WeatherMax 3D for a shade awning and we are excited to show it to the group. This project came out better than expected with a tight fit that pleased both us and the customer.



Disclaimer: Content is submitted by the participant. ATA is not responsible for the content descriptions of the Marine Fabrication Excellence entries.

# Wakeboard Shade Kit—Mike's Marine Custom Canvas

Main Fabric: Sunbrella, Trivantage LLC

Hardware/Findings: YKK Zippers, Trivantage LLC

Hardware/Findings: Tube Joint Hinges

Additional Fabric: Mesh, Trivantage LLC

Hardware/Findings: Deck Hinges

Tops & Sunflys



## WHAT ARE THE PROJECT SPECIFICATIONS?

The customer's wakeboard boat came with a very small sun-top due to the tow rope being attached to the pylon on top of the arch. We added a flap with zippers to the front and rear of the original small top. Then we made a single frame that breaks into four pieces using tube joints with push buttons. The bow mounts to the boat using low profile deck hinges with push buttons so no tools are needed to put up the 6 1/2 foot shade. The webbing straps and quick release buckles pull the shade tight to the existing cleats. The whole kit breaks down into a small mesh bag and can be easily stored inside the console.

## WHAT IS UNIQUE OR COMPLEX ABOUT THE PROJECT?

This simple shade kit can be used on the bow or the stern of the boat, because there are matching flaps and zippers on the front and rear of the original top. This is set apart from other jobs because such the large bow can break down into a small kit without using any tools and minimal hardware.



# Black Thunder Bimini Top—Paul’s Custom Canvas, Inc

Main Fabric: Concord & Sunflower Sunbrella Material, Glen Raven Custom Fabrics LLC

Hardware/Findings: 1" S.S. Tubing, Keystone Bros.

Solar Fix Thread, Keystone Bros.

SGS Graphics

Tops & Sunflys



## WHAT ARE THE PROJECT SPECIFICATIONS?

Our customer, the owner of a magnificent 40-foot black thunder boat approached our company with a unique and exciting request. He desired a custom design Bimini top that would not only provide optimal protection from the sun and other elements but also display a specific design on material that he had drawn out on a sheet of paper. Understanding the importance of both functionality and aesthetics, our team eagerly embarked on this project fueled by the customer's passion for their vessel and their desire for a truly personalized touch. We recognize that the Bimini top cover plays a crucial role in shielding passengers from harsh sunrays while adding an elegant touch to the boat's overall appearance. In this case the customer wanted to be able to travel at high speeds using 1" stainless steel tubing and hardware which is not common in our area. The customer expressed his desire for a design that would capture the essence of his boat reflecting its sleek lines, sophisticated style, and adventurous spirit. The customer wanted a yellow bimini with purple stripes and the Black Thunder logo in the middle of the material. We knew that we would not be able to create the logo with sewing, so we contacted an MFA member that does outdoor graphics to duplicate the logo. We had to ensure that the design seamlessly blended with the fabric of the Bimini top cover. The result was a breathtaking masterpiece that perfectly complemented the stainless-steel tubing and enhanced the boat's overall aesthetic appeal.

## WHAT IS UNIQUE OR COMPLEX ABOUT THE PROJECT?

With the completion of this project the customer's boat now boasts a remarkable Bimini top cover that not only offers superior protection but also serves as a visual representation of his unique style and passion for boating whether he is cruising along the coastline or hosting memorable gatherings on their vessel they can do so with pride knowing that their boat stands out with a one of a kind design that truly sets it apart. We take immense pride in our ability to bring our customers vision to life and provide him with custom design Bimini top that exceeded his expectations this project showcases our unwavering commitment to craftsmanship attention to detail and dedication to customer satisfaction. We are honored to have played a part in enhancing his boating experience in and helping him create lasting memories on the water. This custom project allowed us to provide a heightened level of customer satisfaction. By collaborating with the customer and bringing his specific vision to life with the 1 inch stainless steel tubing and hardware and custom design on his top, we created a sense of ownership and pride for the customer and their new Bimini top for their boat. The size of the boat, being a 40 foot vessel sets this project apart as it requires a larger and more complex Bimini top cover design. Additionally the presence of stainless steel tubing adds a unique element to the project that we do not usually work with, requiring careful attention to integration and seamless blending of the design with the metal framework.



Disclaimer: Content is submitted by the participant. ATA is not responsible for the content descriptions of the Marine Fabrication Excellence entries.

# Selene Solar Array—Hayden Island Canvas

Main Fabric: Sunbrella Captain Navy, Glen Raven Custom Fabrics LLC

1.25" stainless steel tubing

Solbian Marine Solar Panels

Solarfix Thread

Additional Fabric: Top Gun, Marlen Textiles

Tops & Sunflys



## WHAT ARE THE PROJECT SPECIFICATIONS?

Our customer wanted a new bimini that could also support five large flexible marine solar panels so when they are at anchor they don't have to waste fuel or hear the loud noises of a generator. They also wanted better coverage and a stronger bimini than their previous top. The design request also included being able to access the solar panels which needed to be removable by zipper, along with the top so it could be cleaned and maintained. We fabricated a 1.25" frame in a standard layout along with a front horizontal extension with crown in the proper directions to flow water and add strength. This allowed us to mimic the overall shape of the flybridge floor plan.

## WHAT IS UNIQUE OR COMPLEX ABOUT THE PROJECT?

Many challenges were presented in this project. We had to design around a flybridge floor plan the cuts in at the forward edge much narrower than the rest of the bridge. We had to avoid 2 large antennas at this narrower point, and make sure to have cutouts for rigging that holds up the mast on this trawler style yacht. In addition to having enough coverage for shade and rain, there needed to be enough space for 5 large solar panels that zipped in and out along with sewn in cord management. These panels had to be accessible after the bimini was in place. This led to a 2 piece design for the canvas top with the front section removable to access the center panels.



Disclaimer: Content is submitted by the participant. ATA is not responsible for the content descriptions of the Marine Fabrication Excellence entries.

# Outrigger Sun Fly—Charlton's Marine Canvas

Main Fabric: Weatherwax 3D, The Miami Corp.

Tops & Sunflys



## WHAT ARE THE PROJECT SPECIFICATIONS?

This is one Sunfly that attaches to the boats outriggers and can be installed facing forward or rear facing on the boat to provide shade where most needed

## WHAT IS UNIQUE OR COMPLEX ABOUT THE PROJECT?

This sunfly is cool because it will work facing forward or aft of the boat and requires no poles to go in rod holder or take up space anywhere else on the boat. we were very excited to have made this shade solution function in multiple ways.



Disclaimer: Content is submitted by the participant. ATA is not responsible for the content descriptions of the Marine Fabrication Excellence entries.



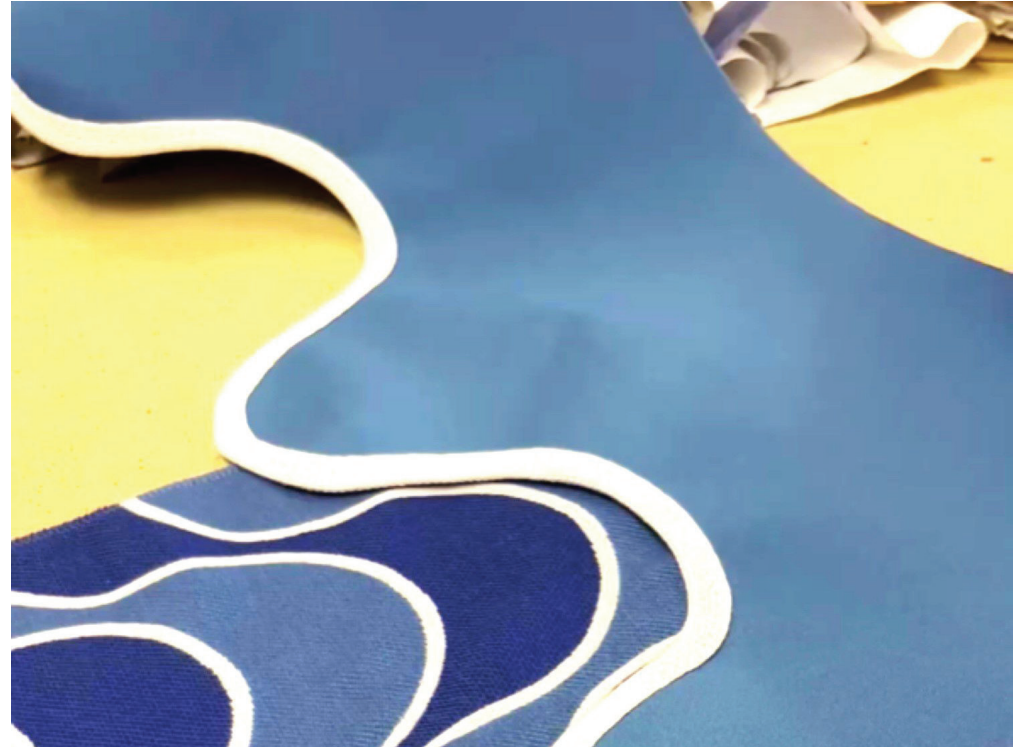
# “Somewhere Over the Rainbow” Surrey—Onboard Interiors & Hood Canvas

Main Fabric: Sunbrella Sky Blue 4624, Trivantage LLC

Secondary Fabric: Sunbrella Natural awning braid

Secondary Fabric: Acrylic Natural Bouillon Fringe

Tops & Sunflys



## WHAT ARE THE PROJECT SPECIFICATIONS?

This 1983 Duffy was custom made for avid New England boaters. Here is the story...Going back to 1983, the Couple has a big motoryacht and enjoys adventures offshore but the motoryacht is too large to enjoy the quaint local harbor they are from. The wife sees this 18ft Duffy at a boat show and falls in love. The very sweet husband then says to Duffy, my wife has fallen in love with this boat but I live near a harbor with moorings and we can't have an electric model so if you can figure out how to get an engine in there I'll buy it! So Duffy custom fits a BMW marine engine and trucks the boat from the West Coast to the East Coast. For almost 40 years, the couple enjoys the boat as a harbor cruiser. In 2010 we worked closely with the couple to refit the boat with new cushions, pillows, and a custom life jacket bag. In the Spring of 2022, this couple now in their 80s, made the tough decision to sell the boat and approached us to ask if we were interested in using the boat as a display boat at boat shows and as a launch to use as a workboat to access customers boats in two nearby harbors. By the Fall of 2022, we took ownership and had to tackle some engine work. But we also got excited about the soft goods and started pulling fabrics that coordinated with the gray-blue color of the accents in the hull. We found a beautiful durable exterior rated Kravet fabric wave design that pulls in two coordinating blues and some off-white that was perfect for cushions. But because the Surrey top had rips from 12 years of wear and tear, we knew we had to tackle that project first. Especially when we knew we would have signage on the boat that advertised Custom Marine Work. We decided to redesign the side drops using the wave like shape of the cushion fabric selection. We made a pattern of the wave design and cut the drops based off that. We decided to trim the drops with the same color that the piping will be on the cushions. We also carefully thought out the design of affixing it to the frame. Did

we want a more modern design with Velcro-like the new Duffys on the market? Deciding against that we opted for adding over 300 grommets with a lashing rope system that would better suit the “vintage” feel of the boat. Then we searched high and low on the market to find tassels that were exterior rated and with no success. We found French bouillon fringe that was exterior rated and then hand rolled, glued and tacked each tassel, then sewed each on the wave shape drop. A tedious labor of love process. We also redesigned the two opening points that access both the port and starboard steps when entering and exiting the boat. We thoughtfully designed these flaps: to be seamless in the aesthetic design from the outside, to help water runoff, open stern to bow with a quick flipping out of the way/ clipping system because when you are on the launch you need to be able to open it quickly so we sewed in magnets to grip instead of trying to tie a strap. After 100 hours of labor we installed the new top in June of 2023 the day before the couples joint Celebration of Life. The top fit like a glove. We drove the boat to the service and kept it on the dock at the local yacht club and took the family members around the harbor after the service. We mounted a plaque on the forward bullhead “Owned and Loved by Susie & Ed Morris 1983-2022.”

## WHAT IS UNIQUE OR COMPLEX ABOUT THE PROJECT?

The love of the boat, the history of the boat and the creative incentive of the previous owner began the process. Its been a very labor-intensive but heartwarming and fulfilling process. It's a small boat but every design element proved so big and important. Marrying the cushion fabric design to the surrey top, and the tassels, oh those tassels! We have never done tassels on a top before, but now that we have seen how they add such fun and whimsy to the design!

